



Charting a Course

COMMUNITY PLANNING

One of the vital roles of local government is planning and preparation of plans. Planning is the term used to describe how a community shapes and guides growth and development. Wise planning ensures that future development is handled in a manner compatible with the best interests of the community.

The results of planning are contained in documents known as comprehensive plans

What is a Comprehensive Plan?

A comprehensive plan is a document, developed through a community-based planning process, used by local government to guide decisions related to growth and development.

Local governments in Georgia are required to submit comprehensive plans to the Georgia Department of Community Affairs (DCA) every ten years. A county and its cities are encouraged to create a joint plan, but may choose to develop their own separate plans.

The Comprehensive Plan for Paulding County and the Cities of Dallas, Hiram and Braswell is June 30, 2017.

What is the value to Paulding County of having a Comprehensive Plan?

A comprehensive plan benefits Paulding County in many ways. The two most important are: 1) a plan ensures future development is compatible with the best interests of the community and 2) an approved plan means Paulding County is eligible for funding from the State of Georgia.

All comprehensive plans developed and approved in accordance with requirements set out by the Georgia Department of Community Affairs (DCA) and adopted by the local government, are known as Current Comprehensive Plans. Communities with Current Comprehensive Plans are granted Quality Local Government (QLG) status.

Why is QLG important to Paulding County?

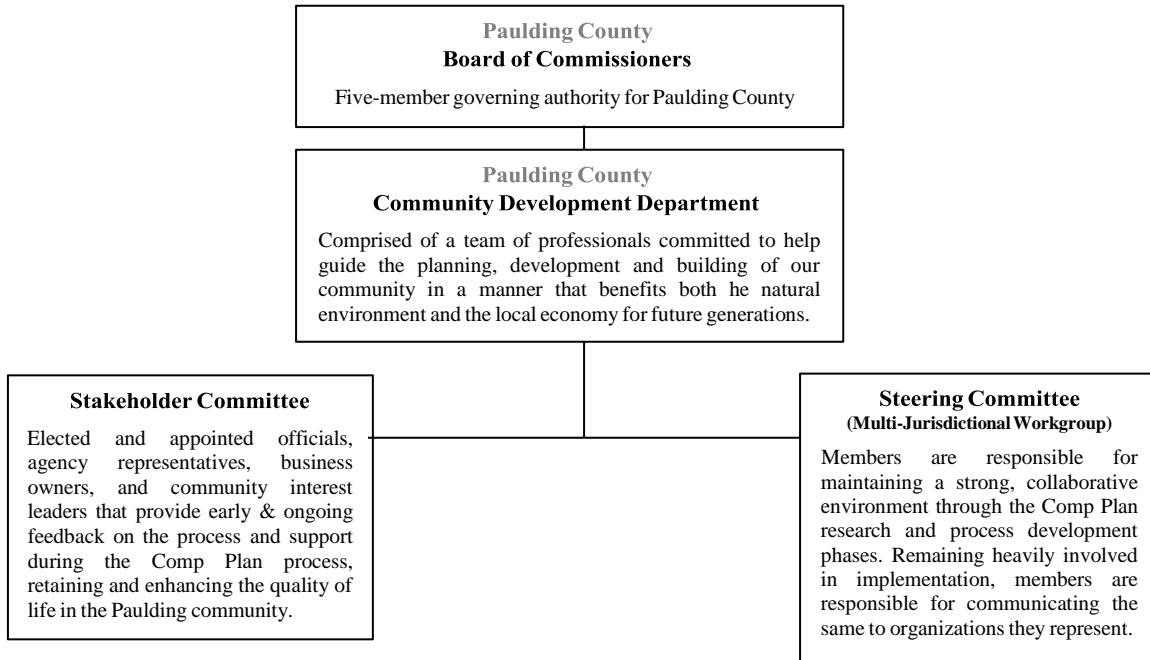
Communities who achieve Quality Local Government Status (QLG) are eligible for funding from the State of Georgia.

Over \$100 million dollars of QLG-enabled funds have paid for such projects infrastructure projects as the Richland Creek Reservoir and the revitalization of historic Downtowns Dallas and Hiram.

What is the process for completing the Comprehensive Plan?

Though responsibility for completing a Comprehensive Plan falls to each local government, Paulding chose to submit a consolidated plan in 2007 and are taking the same approach to the 2017 submittal.

In 2015, a multi-jurisdictional workgroup, comprised of staff members from Paulding County, Dallas, Hiram and Braswell as well as representatives from the School District, Chamber of Commerce and Office of Economic Development, was formed to consider and create an efficient, effective and collaborative approach to updating the 2017 Comprehensive Plan.



How will the public be involved?

Community participation will be encouraged through six (6) public meetings held at designated times throughout the planning process:

October 2015 – First Public Hearing

Summer 2016 – Interactive Community Meetings and the public is invited to drop in between 4 pm to 7 pm

August 11 @ Dallas Civic Center
August 18 @ Hiram Events Center
September 8 @ New Georgia Library
September 15 @ Crossroads Library

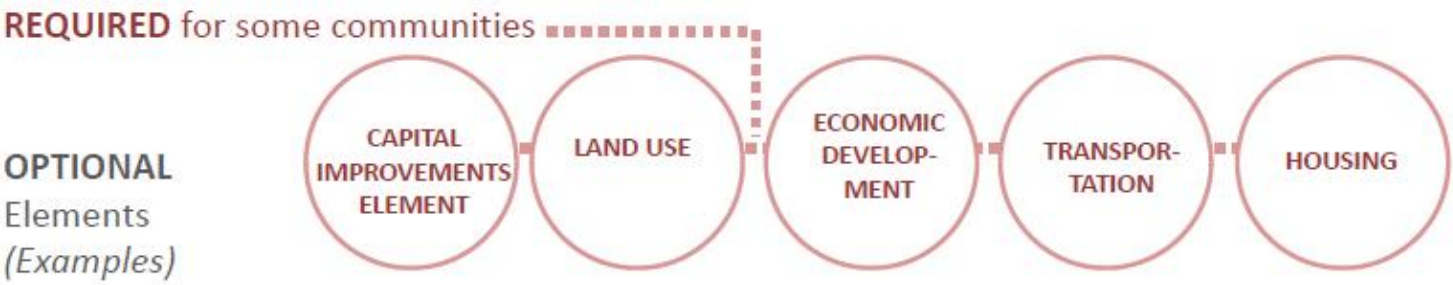
December 2016 – Second Public Hearing



What will be included in the Comprehensive Plan?

Below is the Menu of Plan Elements provided by DCA to guide counties and cities in preparing their Comprehensive Plan. In addition to the required Community Goals, Needs & Opportunities and Community Work Program; Paulding County is required to have a Land Use Element and Transportation Element. For the 2017 Update the County has elected to add the Economic Development Element and many of the optional elements will be included with the Land Use Element.

Menu of Plan Elements



TARGET AREAS	PUBLIC SAFETY	GREENSPACE	EDUCATION	RECREATION	HUMAN SVCS	NATURAL RESOURCES
INTER-GOVERNMENT COORDINAT'N	SOLID WASTE MANAGEMENT	INFRA-STRUCTURE & FACILITIES	COMMUNITY SUSTAINABILITY	HISTORIC & CULTURAL RESOURCES	DISASTER RESILIENCE	

